

P203 Pressure Reducing Regulator



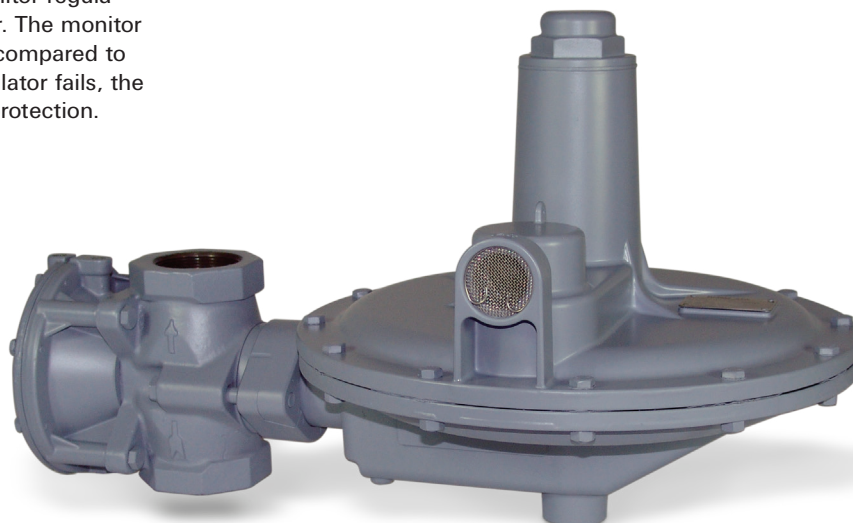
The P203 and P203H are available with a true monitor regulator, which acts independently of the main regulator. The monitor provides equivalent overpressure protection when compared to a standard two-regulator monitor setup. If one regulator fails, the other regulator provides control and overpressure protection.

Applications

- Commercial / Industrial / Service
- Gas Engine Control
- Gate Applications

Features

- Integral Monitoring
- Fast Acting Minimizing Shock
- Internal Relief



Specifications

Maximum Inlet	See Table 1 - P200	
Maximum Emergency Outlet	15 PSIG	
Port Sizes	1.25 NPT	
	1.5 NPT	
	1.5 NPT x 2 NPT	
	2 NPT	
Orifice Sizes	1/4"	
	3/8"	
	1/2"	
	3/4"	
	1"	
	1-3/16"	
End Connections	NPT	
	125 FF Flange	Iron Units Only
Temperature Range	-40 °F to 200 °F	
	-40 °C to 93 °C	
Approx. Weight	30 lbs. (11.8 kg)	

Materials of Construction

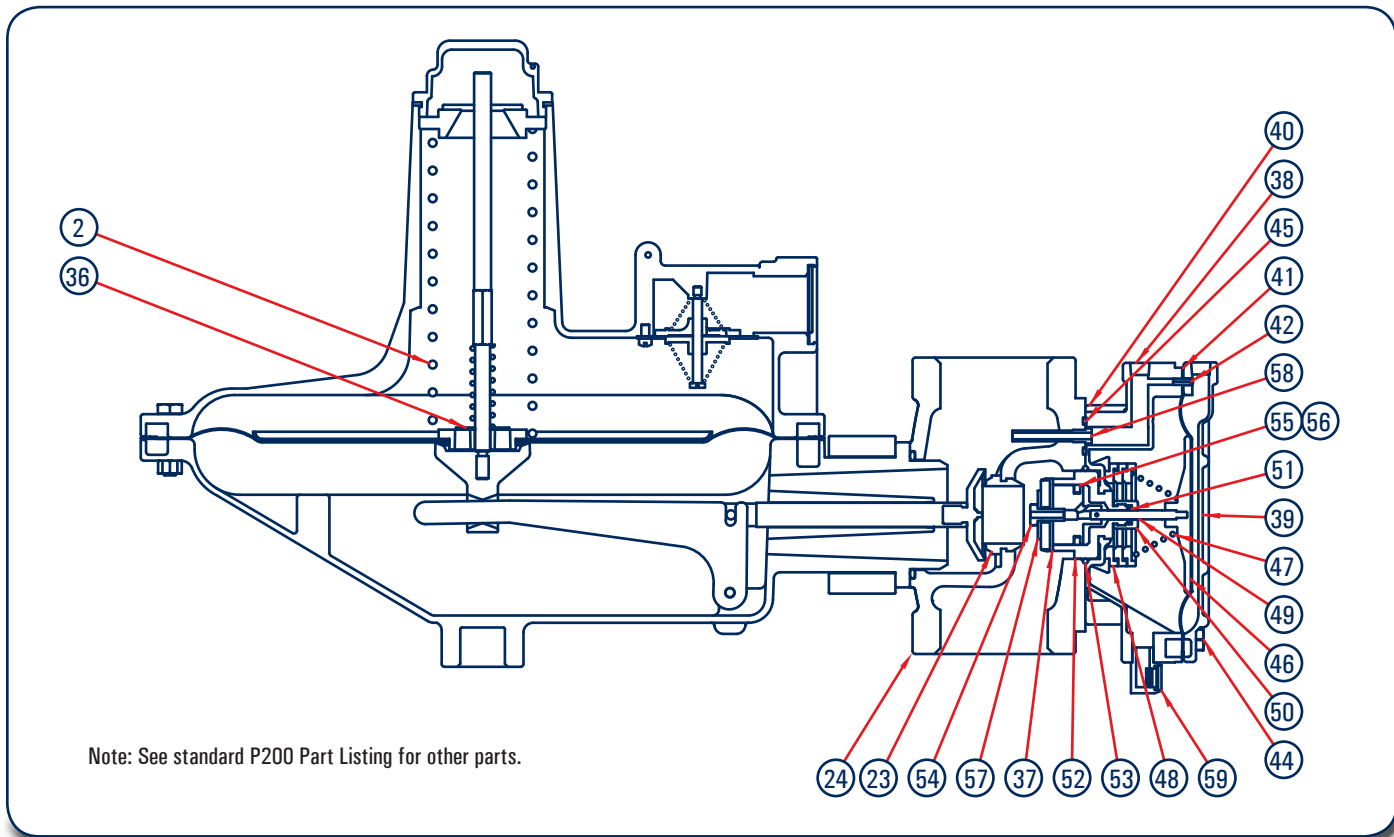
Adjusting Screw	Aluminum
Body	Ductile Cast Iron
Bonnet	Aluminum
Closing Cap	Aluminum
Diaphragm	Nitrile
Lower Casing	Aluminum
Molded Seat Assembly	Nitrile
Orifice	Aluminum
Upper/Lower Spring Seat	Aluminum
Flange	Iron

P203 Integral Monitor Data

Type	Control Spring Part Number and Color	Outlet Pressure Range		Maximum Downstream Pressure with Integral Monitor in Operation		Maximum Flow Through Internal Relief Valve with Integral Monitor in Operation ¹		Relief Monitor Spring Part Number and Color	Number of Spring Seats Required
		Inches w.c.	BAR	PSIG	BAR	SCFH	Nm ³ /h		
P203	655-697-002 Brown	2 - 4.5" W.C.	0.005 - 0.011 BAR	0.8	0.06	950	25.5	655-746-000, Green	0
	655-697-003 Red	3.5 - 6.5" W.C.	0.009 - 0.016 BAR	----	----	1000	26.8	655-746-000, Green	1
	655-697-004 Black	5 - 9" W.C.	0.012 - 0.022 BAR	----	----				
	655-697-005 White	8 - 14" W.C.	20 to 35 mBAR	----	----	1200	32.2	655-746-000, Green	2
		8 - 12" W.C.	20 to 30 mBAR	1.4	0.10	1350	36.2	655-746-001, Red	0
		10 - 20" W.C.	25 to 50 mBAR	1.8	0.12	1600	42.9	655-746-001, Red	1
		11 - 21" W.C.	27 to 52 mBAR	2.2	0.15	1800	48.2	655-746-002, Blue	0
	655-697-006 Dark Green	14 - 30 W.C.	0.035 - 0.075 BAR	2.8	0.19	1900	50.9	655-746-001, Red	2
				3.0	0.21	2000	53.6	655-746-002, Blue	1
				3.0	0.21	2200	60.0	655-746-003, Silver	0
P203H	655-697-007 Dark Blue	1 - 2 PSI	0.069 - 0.138 BAR	3.8	0.26	2200	60.0	655-746-002, Blue	2
				4.0	0.28	2500	67.0	655-746-003, Silver	1
	655-697-008 Orange	1.5 - 3.25 PSI	0.103 - 0.224 BAR	5.0	0.35	3000	80.4	655-746-003, Silver	2
				6.0	0.41	3000	80.4	655-746-003, Silver	3

1. Flow of 0.6 specific gravity natural gas in SCFH at 60°F and 14.7 psia and Nm³/h at 0°C and 1.01325 bar.

P203 Parts List



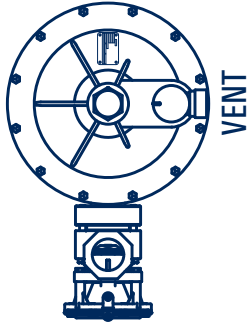
Note: See standard P200 Part Listing for other parts.

Item	Description	Qty.	Part Number
2	Range Spring - Normal (0)	1	See Table
	2" - 4.5" WC - Brown, Plated Steel	1	655-697-002
	3.5" - 6.5" WC - Red Plated Steel	1	655-697-003
	5" - 9" WC - Black, Plated Steel	1	655-697-004
	6" - 14" WC - Purple, Plated Steel	1	655-697-011
	8.5" - 18" WC - Gray, Plated Steel	1	655-697-005
	14" - 30" WC - Dark Green, Plated Steel	1	655-697-003
	Range Spring - High (H)		
	1 - 2 PSI - Dark Blue, Plated Steel	1	655-697-007
	1.5 - 3.25 PSI - Orange, Plated Steel	1	655-697-008
2 - 5 PSI - Yellow, Plated Steel	1	655-697-009	
23	Orifices		
	1/4" Aluminum	1	688-061-000U
	3/8" Aluminum	1	688-061-001U
	1/2" Aluminum	1	688-061-002U
	3/4" Aluminum	1	688-061-003U
	1" Aluminum	1	688-061-004U
24	Body		
	Iron 2" NPT	1	664-384-000
	Iron 1.5" NPT	1	664-383-000

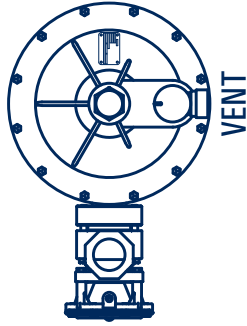
Item	Description	Qty.	Part Number
P203 Monitor Parts Only - See P200 for other Parts			
36	Relief Restriction	1	662-237-000
37	Disk Holder Assembly	1	822-044-000
38	Pipe Plug	2	648-504-000
39	Monitor Spring Case	1	604-264-000
40	Lower Monitor Spring Case	1	604-237-000
41	Diaphragm	1	618-101-000
42	Roll Pin	1	635-074-000
44	Cap Screw	4	648-463-002
45	O-ring	1	649-000-185
46	Diaphragm Plate	1	638-079-000
47	Monitor Springs		
	Green Spring (See Monitor Data Table)	1	655-746-000
	Red Spring (See Monitor Data Table)	1	655-746-001
	Blue Spring (See Monitor Data Table)	1	655-746-002
	Silver Spring (See Monitor Data Table)	1	655-746-003
48	Lower Spring Seat	0-3	650-178-000
49	Piston Assembly	1	809-237-000
50	O-ring Retainer	1	643-206-000
51	Piston Assembly O-ring	1	649-000-001
52	Piston Guide	1	626-112-000
53	Piston Guide O-ring	1	649-309-003
54	Disk Holder Screw	1	648-545-000
55	Piston Ring Expander	1	644-062-000
56	Piston Ring	1	644-062-000
57	Washer	1	662-236-002
58	Pilot Tube	1	660-082-000
59	Vent Assembly	1	836-004-000



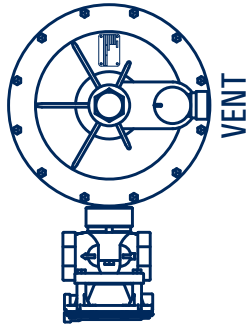
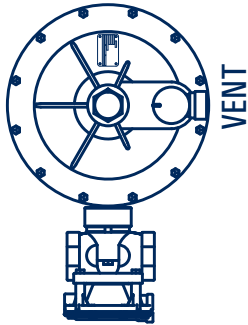
P203 Port Orientation (Ordering Matrix Digit "12")



UP - CODE 1 STANDARD

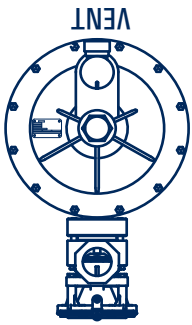


DOWN - CODE 2

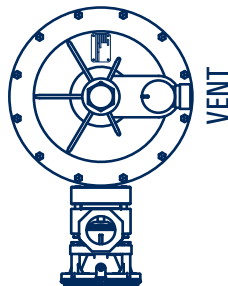


* Port orientation is based on the body's
"Out" port location in relation to the top view of the regulator.

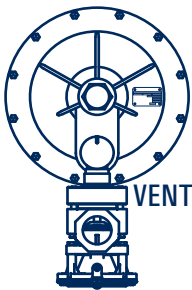
P203 Bonnet Vent Orientation (Ordering Matrix Digit "13")



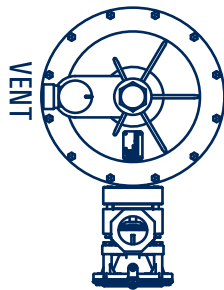
12 - CODE C



3 - CODE D STANDARD



6 - CODE E



9 - CODE F

