

Wafer Check Valves

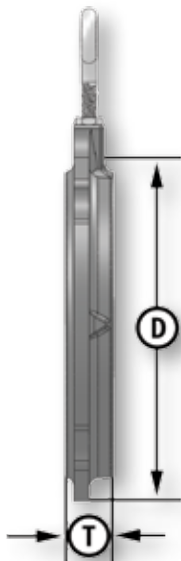
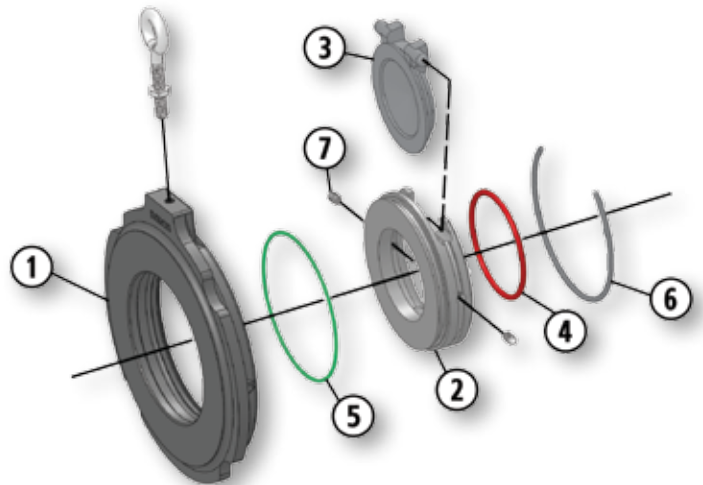
Wafer Check Valves Carbon Steel



- Thin Pattern Swing Check Valve
- ANSI 150 (285 PSI WP)
- ANSI 300 (740 PSI WP)
- ANSI 600 (1480 PSI WP)
- 2" Through 6"
- Forged Steel Body Construction
 - Replaceable Seat Disc Cartridge
 - Seal Located in Seat, Thus Protected From Flow
 - NACE Standard
 - 316 Stainless Steel Disc Standard
 - Generally Larger Port Sizes Than Other Brands

Material Description

ITEM	PART NAME	CARBON STEEL SEAT	STAINLESS STEEL SEAT
1	Body	ASTM A105	ASTM A105
2	Seat	Replaceable Carbon Steel	Replaceable 316 Or 17-PH Stainless Steel
3	Disc	Replaceable 316 Stainless Steel	Replaceable 316 Stainless Steel
4	O-Ring	Seat Seal: Fluorocarbon	Seat Seal: Fluorocarbon
5	O-Ring	Assembly Seal: Buna-N	Assembly Seal: Fluorocarbon
6	Retainer	Stainless Steel	Stainless Steel
7	Set Screw	Stainless Steel	Stainless Steel



Dimensional Data

SIZE	CATALOG NUMBER		PORT	D	T	STUD LENGTH	LBS.
	CARBON STEEL SEAT	STAINLESS STEEL SEAT					
2	2T-150	2T-150S	1.25	4.12	.75	4.25	2.5
2	2T-300	2T-300S	1.25	4.37	.75	4.50	2.5
2	2T-600	2T-600S	1.25	4.37	.75	5.25	2.5
3	3T-150	3T-150S	2	5.37	.75	4.50	4.4
3	3T-300	3T-300S	2	5.87	.75	5.25	4.4
3	3T-600	3T-600S	2	5.87	.75	6	4.4
4	4T-150	4T-150S	2.81	6.87	.75	4.50	7
4	4T-300	4T-300S	2.81	7.12	.75	5.50	6.95
4	4T-600	4T-600S	2.62	7.62	.87	7	8.5
6	6T-150	6T-150S	4.50	8.75	.87	5	13.5
6	6T-300	6T-300S	4.50	9.87	.87	5.75	13.6
6	6T-600	6T-600S	4	10.50	1.12	8	19